

L-shaped Mount Plate with Silicone Handle for FUJIFILM X half

硅胶L型手柄（适用于富士 X half）

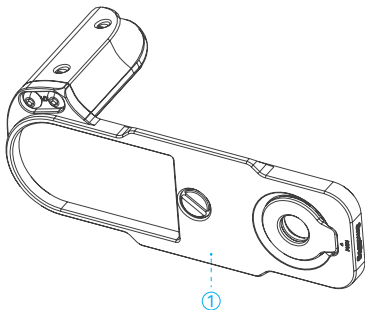
Operating Instruction / 操作指引

- Thank you for purchasing SmallRig's product.
感谢您购买 SmallRig 产品。
- Please read this Operating Instruction carefully.
使用本产品之前，请仔细阅读操作指引。
- Please follow the safety warnings.
请注意所有警告提示并遵循使用操作指引的所有指令。

In the Box / 包装清单

L-Shaped Grip	× 1	Hot Shoe Cover	× 1
L型手柄		热靴盖	
Guarantee Card	× 1		
保修卡			

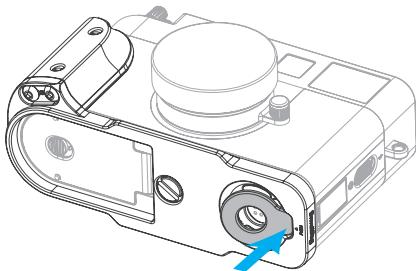
Product Details / 产品介绍



- ① Arca-Swiss Plate
阿卡规格快装板

L-Shaped Grip Installation Instruction / L型手握安装步骤

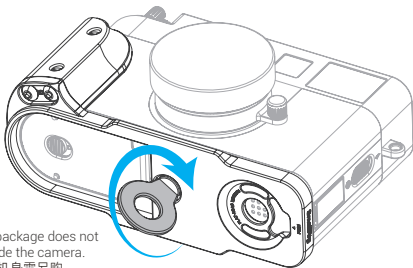
1



* The package does not include the camera.

* 相机机身需另购

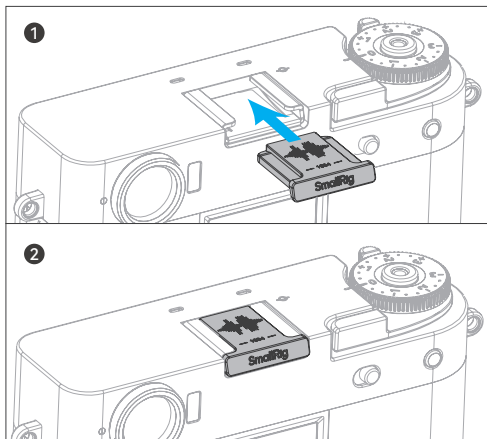
2



* The package does not include the camera.

* 相机机身需另购

Hot Shoe Cover / 热靴盖安装步骤



Specifications / 产品参数

Compatibility 兼容性	FUJIFILM X half 富士 X half
Material(s) 主要材质	Aluminum Alloy, Silicone 铝合金、硅胶

* 技术参数如有改动，以实物为准，恕不另行通知。

Specifications subject to change without prior notice. Please refer to the physical product for the most up-to-date information.

Manufacturer Email: support@smallrig.com

Manufacturer: Shenzhen Leqi Innovation Co., Ltd.

Add: Rooms 101, 701, 901, Building 4, Gonglianfuji Innovation Park, No. 58, Ping'an Road, Dafu Community, Guanlan Street, Longhua District, Shenzhen, Guangdong, China.

Consignor: Shenzhen LC Co., Ltd.

Add: Room 201, Building 4, Gonglianfuji Innovation Park, No. 58, Ping'an Road, Dafu Community, Guanlan Street, Longhua District, Shenzhen, Guangdong, China.

制造商: 深圳市乐其创新股份有限公司

地 址: 中国广东省深圳市龙华区观澜街道大富社区平安路58号共联富基创新园
4栋101、701、901

委托商: 深圳市乐长科技有限公司

地 址: 中国广东省深圳市龙华区观澜街道大富社区平安路58号共联富基创新园
4栋201



WE ARE HERE FOR YOU
服务与支持



ETICHETTATURA AMBIENTALE
ENVIRONMENTAL LABELING

执行标准: GB/T 26572-2011



GAVIMOSA CONSULTORIA, SOCIEDAD
LIMITADA, CASTELLANA 9144, 28046 Madrid,
compliance.gavimosa@outlook.com



Sea&Mew Accounting Ltd,
Electric Avenue Vision 25, London,
Enfield EN3 7GD, info@seamew.net

CE RoHS



FR

LE TRI
+ FACILE



Boîte 1



Papier 5



BAC
DE TRI

合格证
已检验



Séparez les éléments avant de trier

Made in China | 中国制造